



23 St. Davids Road  
Northampton, NN2 7QJ



Derran Dooley  
Partnered With  
**Simpsons**  
Property Experts



Located in the vibrant and well-connected area of Kingsthorpe, this striking three-bedroom period home stands out immediately for its bold black aesthetic and uniquely atmospheric feel. Thoughtfully transformed by the current owner, it blends modern luxury with a moody, mystical character that gives the property a truly unforgettable presence.

Step through the front door and the entrance hall sets the scene: stylish, dramatic, and beautifully finished, guiding you into a home that feels both contemporary and full of personality. The dining room at the front, framed by a bay window, is a warm and inviting space—perfect for intimate dinners, slow weekend breakfasts, or entertaining with style. The modern refitted kitchen continues the home's design story, offering high-end appliances, sleek cabinetry, and a layout perfect for both everyday life and cooking with confidence.

Toward the rear, the living room invites you to unwind. French doors flood the space with natural light while drawing your eye toward the garden. A feature fireplace adds charm and contrast, creating a perfect setting for cosy evenings or relaxed gatherings that flow outdoors.

Upstairs, three double bedrooms offer generous space and versatility. The principal bedroom at the front is bright and impressive, while the additional two rooms make ideal spaces for children, guests, or creative uses. The refitted family bathroom brings a sense of calm with clean finishes and thoughtful detailing.

Outside, the garden continues the low-maintenance, lifestyle-focused theme—Astro turf, raised planters, and room for al fresco dining create a space that's easy to enjoy. The garden studio at the rear, currently used as an office, provides an inspiring spot to work, create, or simply escape with a book.

A home with a rare sense of character and presence, this one-of-a-kind property combines modern upgrades, a bold visual style, and generous proportions—all in a popular and convenient Kingsthorpe location.

Offers over £260,000



3

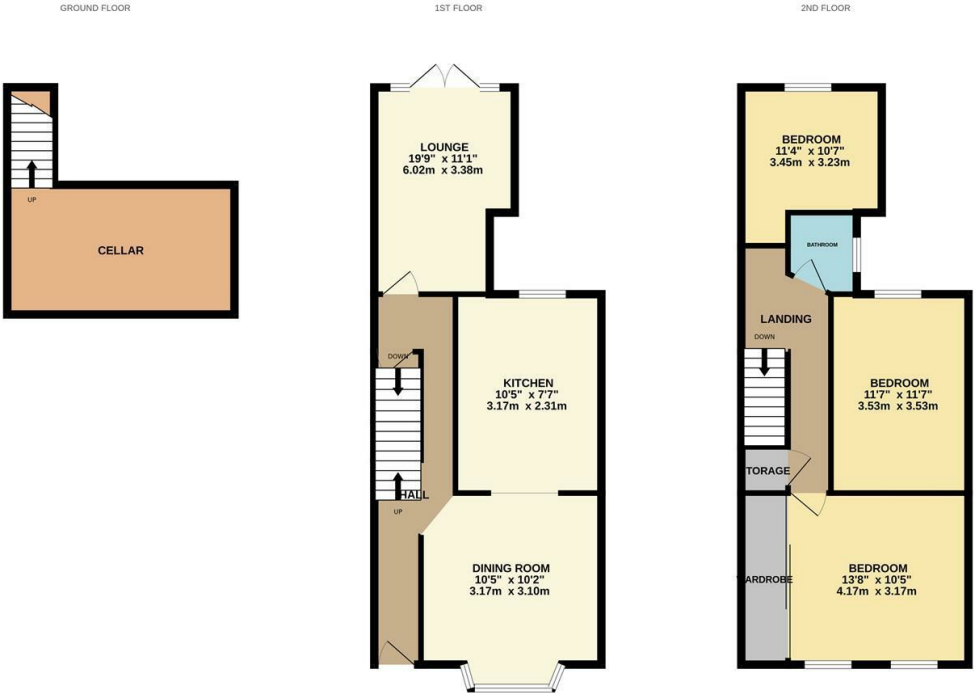


1

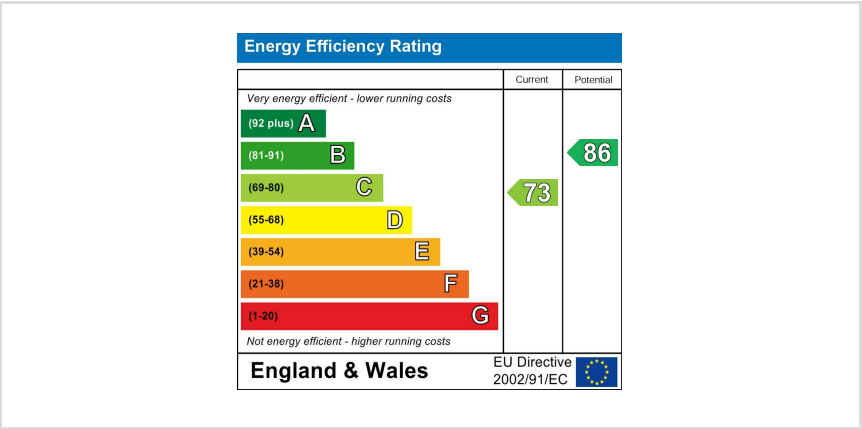


2





Whilst every attempt has been made to ensure the accuracy of the floor plan contained here, measurements of doors, windows, rooms and any other items are approximate and no responsibility is taken for any error, omission, or mis-statement. The plan is copyright to Simpson and Partners and is for illustrative purposes and should only be used as such by any prospective purchaser. The services, systems and appliances shown have not been tested and no guarantee as to their operability can be given.  
Made with Metreapp 5/2025







Derran Dooley  
Partnered With  
**Simpsons**  
Property Experts

Tel: 01604 969706

Email: [northampton@simpsonspropertyexperts.co.uk](mailto:northampton@simpsonspropertyexperts.co.uk)

Web: [simpsonspropertyexperts.co.uk/our-locations/northampton](http://simpsonspropertyexperts.co.uk/our-locations/northampton)

